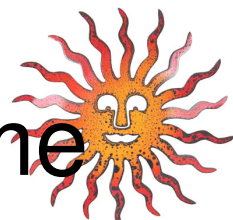




The Chalice Flame



The Monthly Newsletter of the Unitarian Universalist Church of Kent

July 2008

Sunday Services

9:30 and 11:15
10:30 starting June 8

228 Gougler Ave.

Kent, Ohio 44240

Phone: 330-673-4247

Fax: 330-677-4772

www.kentuu.org

uukent@sbcglobal.net

Minister:

Rev. Melissa Carvill-Zierner
minister-uukent@sbcglobal.net

Minister's office hours:

Tuesday - Friday
By appointment

Office Manager:

Judy Brannan

Office hours:

Mon. through Fri. 9 - 1:30

Religious Ed. Director:

Diana VanWinkle

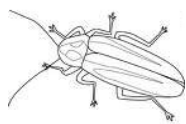
dre-uukent@sbcglobal.net

Office hours:

Tuesday by appointment

Music Director:

Hal Walker



Newsletter editor:

Brad Bolton

bbolton@neo.rr.com

Deadline:

The 15th each month

July is often a slower time in the life and calendar of our church, but this July promises to be an exception. I am especially excited to let you know that we will be participating in the Tents of Hope project sponsored by the Unitarian Universalist Service Committee (UUSC). The UUSC has been working with the Save Darfur Coalition to educate and advocate for an end to the genocide in Darfur. This project will give us the chance to respond creatively and compassionately to the genocide in Darfur while educating ourselves and others in the process. This project is being led by our Director of Religious Education, Diana Van Winkle along with members of our Social Justice Committee. Our children and youth will be active participants in the processes of painting the tent and in the outreach that will follow. The tent will be on display at the Heritage Festival in downtown Kent and we will take turns staffing the tent and answering the questions of the people who stop by our display. If you would like to participate please look for the sign up sheet in the foyer of the church or give Diana a call at the office.

Several of you have shared your concern about the struggle our local food pantries will have this summer to provide for those in our community who are hungry. We know that donations to food pantries are generally down in the summer months. We also know that our local food pantries are likely to be asked to respond to increased need this summer given the state of the economy. We will do what we can to help by having a food drive throughout the month of July. The drive kicks off on July 6 when children and youth will join us for the beginning of the service. If you are able, please bring a canned or boxed food item with you to the service that day and each Sunday in July. Our efforts will make a meaningful difference for our friends and neighbors in need.

Later in the month you are invited to attend a special screening of a new documentary called *Mirrors of Privilege: Making Whiteness Visible*. Produced by Dr. Shakti Butler, this film features the experiences of white women and men who have struggled with what it means to be white in this country and who have committed themselves to challenging racism and white superiority. The screening will begin at 7:00 pm on Thursday, July 24 in the sanctuary and will be followed by a discussion which I will facilitate. The evening will conclude at 9:00. I find this video extremely moving, inspiring and provocative and hope you will join me that night if you can. This film is the first in a series of opportunities which will be offered by our newly formed Anti-Racist Action Team. An improv theatre event will follow in August and we are in the process of planning for programming in the fall. We are looking for additional members for the team so please let me know if you are interested.

In between all this activity, my own personal journey will include a trip to Phoenix, Arizona. Ellen and I will be returning my nieces Anna and Aliyah to their mother, my sister, and the rest of my family. This is a tender and bittersweet time for us. We have all opened our hearts and formed attachments and it is hard to say goodbye. Please keep us in your thoughts and prayers. I will be gone from July 8 through July 20. During that time Christie Anderson and Susanna Smart will be responding to any urgent pastoral concerns that may arise. You may get their numbers by calling the church office.

In faith,

Melissa

July Sermons

July 6

Challenging Apathy

Rev. Melissa Carvill-Ziemer and worship associate Marion Yeagler

The title for this morning's service comes from Beth Wills who purchased the chance to select a theme for a service at last year's service auction. We will be kicking off our month long food drive for Kent Social Services this morning so please bring a canned or boxed food item with you to the service. The children and youth will join us for the first 15 minutes of the service and will have a chance to both contribute to and assist with the collection of the food before they head for their classes.

July 13

Humanism and Spirituality

Brent Bowen and worship associate Lori McGee

The word "spirituality" takes on different meanings for different people. Humanists, who don't necessarily believe in a supernatural spirit who guides the universe and our lives, build their life meaning around a human spirit and a sense of connectedness. A sense of awe about our planet and the universe, the excitement of living the full life, and the humility that comes with the limits of knowledge inform the humanist's spirituality.

Brent Bowen is a humanist from the Center for Free Inquiry in Cleveland.

July 20

Living Out Loud!

Linda Mishler, Kathy Walker, and musicians

Why wait until this fall? Join us this summer for a fun-filled and lively Music Sunday as members share their insights into "living out loud" as Unitarian Universalists. Are you living out loud? Do you want to share the good news of Unitarian Universalism? Sunday Program committee members Linda Mishler & Kathy Walker will lead this lively service along with the music makers & Hal fresh from Summer Institute and few other surprises.

July 27

Inspiration!

Rev. Melissa Carvill-Ziemer

I will surely return from our annual Unitarian Universalist Association General Assembly with much to share. This morning's service will be inspired by my experience. You will read in this newsletter about how our church expenses remain constant in the summer months even though our revenues often go down. For those who may have gotten behind in your planned contributions, we dub this morning "Catch Up On Your Pledge Day" if you are able.

Sermons and Minutes Available

Some of Rev. Melissa Carvill-Ziemer's past sermons are available in the Founders' Lounge for \$1.00 each. Your donation can be placed in the black lockbox, also in the lounge.

You can listen to and download selected past services at the church website, www.kentuu.org. Recordings of recent complete sermons are available in the library on a shelf next to the door. A sign-out sheet can be found there, also.

The Board meeting minutes are available for review in the Founders' Lounge.

- The office secretary, Judy Brannan, will be on vacation July 30 through August 7, and will return to the office August 8.
- Diane Van Winkle, director of RE, will be away at a learning styles training session from July 6th thru the 12. July 13 thru 19 will find her at Summer Institute.
- Our minister will be away from July 8 through July 20. During that time Christie Anderson and Susanna Smart will be responding to any urgent pastoral concerns that may arise.

Moderator's Message

I recently read an interesting article entitled "Who owns a congregation?" written by Dan Hotchkiss and published by the Alban Institute (© 2008). In his article, Hotchkiss states that a board is a fiduciary that exists to act in faithfulness to the interest of the owner. But, he asks, who is the owner of a congregation? Hotchkiss argues that the answer to that question is "The owner of a congregation is its mission." In other words, he states, a congregation exists to serve its mission. The duty of a congregation's leaders, therefore, is "...to articulate the mission well and to ensure that what the congregation does will realize the mission." (Hotchkiss, 2008, p. 2).

At our annual meeting on May 11, 2008 we the members of the U-U Church of Kent voted to adopt the following as our mission statement:

"Through spirited worship and open-minded religious exploration, our mission is to inspire people to live caring lives of meaning and purpose. We seek to encourage curiosity, strive to create peace and justice, and care for the living Earth with reverence and gratitude."



Native dancer performing a grasslands dance at Hogwarts

Participate in Music Sunday

Do you want to Live Out Loud? Why wait until this fall? Join us on Sunday, July 20th, for a fun-filled and lively Music Sunday as members share their insights into "living out loud" as Unitarian Universalists. Are you living out loud? Do you want to share the good news of Unitarian Universalism? Let us know! Please contact Linda Mishler or Kathy Walker if you wish to participate in this summer's Music Sunday.

"The owner of a congregation is its mission." I believe it is important for all of us who are members of the UUCK to know and regularly remind ourselves of our mission. It's important for all of us, but especially important for members of the Board of Trustees, who, according to Article V. Section 5. of our by-laws have fiduciary responsibility for the Church. So during my term as Moderator we will begin each Board of Trustees meeting by reading our mission statement. I want the Board to commit the statement to memory so that we are able to call upon it every time we deliberate and/or take action on matters pertaining to our assigned responsibilities as Board members.

"The owner of a congregation is its mission." May all of us, Board members and non-members alike be ever mindful of our responsibility to our owner.

If you would like to read the full article by Dan Hotchkiss, you can find it at www.alban.org/conversation.aspx?id=5902

Yours in shared ownership,
Rhonda Richardson, Moderator



Turning a Page at the Church Library

The book and DVD of Al Gore's Inconvenient Truth have arrived and will be on the shelves soon. For people who do not realize it, the book is written for ages 11 and up. This makes it perfect for family discussions or use in lessons, etc.

The following are some items of interest donated to the library.

In Stranger at the Gate, To Be Gay and Christian in America, Mel White details his 25 years of being counseled, exorcised, electroshocked, and more because his church said homosexuality was wrong. It is a brave book by a good man whose words can make us richer in spirit and much wiser, too.

Creating Mandalas by Susanne Fincher is a practical and inspiring guide to creating the circular drawings known as mandalas.

We have CD recordings of recent Sunday services on the shelf to the right of the library door. These recordings contain the whole service including music. There is a small tablet on which to sign them out.

Martha Kluth

Next Stop: Our Future

“Money has everything to do with religion, with the choices that we make about how to be in relationship with ourselves, our neighbors, and with the divine. Religion is about life, and life, it seems, has a whole lot to do with money” – Rev. Lynn Ungar

The finance committee is busy getting a budget ready for the 6 month period to bridge us into our new fiscal year. As finance works on the budget, our team is busy trying to nurture the idea of stewardship among the members and friends of UUC Kent, those who have pledged in prior years and those who have not.

Between now and October, we hope to have conversations with each and every one of you to talk about the mission of this congregation and how all of us can feel ownership of that mission.

Last month, Marion introduced the Stewardship Team to you. We are but a small part of the whole. There are over 30 other congregants who help with all the planning, scheduling, dinners and meetings that will happen over the next few months. We hope that, by this fall, each of you has had the opportunity for questions, answers and feedback regarding stewardship and our financial responsibility to the church.

If you have any questions or would like to join the team, please contact: Linda Mishler, Chris Hurlbut, Kim Marfy, Kathy Walker, or Marion Yeagler.



LoveLight helps low-income kids

LoveLight is a non-profit organization that addresses some of the needs of lower-income children in the Kent-Ravenna area. It provides tutoring and after-school programming, such as intergenerational educational exercises, literacy activities, art and stories among other services and activities, at the StarChild Center. Throughout the summer the organization offers a lunch program that provides nutritious meals while encouraging healthful lifestyle habits and positive social interaction by including activities for the children within their neighborhoods and communities. Last year 2,390 meals were provided to children.

Kristina Spaude

Building Community Through SGM

People familiar with the Small Group Ministry concept recognize that the SGM program offers an opportunity to know others on a deeper level and explore new possibilities through listening and sharing. A lesser known but significant feature of the program offers the opportunity to live one's faith. This year's nine SGM groups engaged in a variety of projects that benefited individuals, the church and the wider community. Three SGM groups chose projects that reached out to others by: visiting a church elder residing in a nursing home, working at the county clothing center and providing a "thank you" meal to the church Board. Two groups furthered church hospitality, with one group handling coffee hour for a month and another purchasing and decorating candles to give to visitors. One group engaged in physical activity by performing gardening work around the church and organizing additional help from the RE children. They plan to continue with more landscape upkeep throughout the summer. Two groups chose to work with books, with one group sorting books for the annual church book sale. The other group categorized and alphabetized the children's books in the church library and prepared a bibliography for each book. And last, one SGM group decided on a pastoral care project by working together to prepare and freeze meals to meet future pastoral needs of members of the congregation. Thank you to the 70 people who offered their time and talents.

Many positive comments about the service project experiences were noted on the SGM program evaluations. The next season of SGM will start in October, so consider joining for meaningful discussion and an enjoyable and satisfying group activity.



Kristina Spaude with award and crown for collecting the most toilet paper tubes. Hogwarts, summer 2008.

It's All About the Money

May and 2008 Year-to-date Financials:

	REVENUES	EXPENDITURES	REVENUES-EXP
MAY ACTUAL:	\$16052	\$18245	-\$2193
MONTHLY BUDGET:	\$23761	\$16505	\$7256
YEAR-TO-DATE ACTUAL:	\$85999	\$85690	\$309
YEAR-TO-DATE BUDGET:	\$88639	\$89413	-\$774

Above are the numbers for the general operating fund [the budgeted items] for May. Revenues for the month were way below plan, and year-to-date revenues were below plan. Expenses for the month were above plan, but the year to date expenses remain below plan.

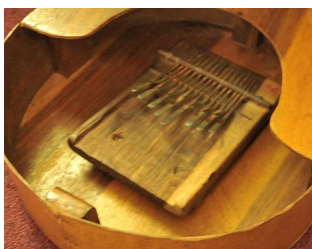
These numbers every month are for planned Revenues and Expenditures, which relate to cash in and cash out, but are not the same. For example included in January Revenues are prepaid pledges from last year. The cash from these came in last year, but since that money was for 2008, it did not show up as revenue until January 2008. Also, like our personal checkbooks, there is always the issue of statement balances, which is what the bank shows, including all checks cashed to date, vs. checkbook balance, which is lower since checks have been written that are not yet cashed.

Our balances have considerable fluctuation over a month, since the payroll occurs twice a month, Sunday intakes vary from about \$1500 to \$6000, with very little predictability, and we have an average of \$5000 in other bills during the month. For example at the end of May we had a [checkbook] balance of just under \$10,000 on May 27, then paid various bills and reimbursements, as well as the 2nd payroll of the month, and by the 31st the balance was about \$1000. This happens often, and requires extra cash in the checking account to handle the fluctuations within the month. Since there is no "credit line" attached to it, we can never go below zero, even for a few days.

This is one reason for the Cash Reserve Account, which we use to weather these fluctuations. At the end of last year, we put \$15,355 into this interest-bearing account. About \$5000 of this was from 2008 pledges that we knew we would not need immediately, and the rest was extra cash. Our 2008 monthly plan predicted we would need to use some of this money beginning in February, and about \$8000 by April. In fact we did not need to tap any of this money until March, and we did not need the \$8000 until May.

We are now investigating various ways of handling the fluctuations as we approach the summer months when pledge income typically falls off, but expenses, particularly personnel expenses [over 70% of our budget] do not fall off. Last year, June had low revenues and high expenses, which exceeded revenues by many thousand dollars. Your help in keeping pledge payments at the same level over the summer, or paying your annual pledge now rather than later will make the situation better this year, and prevent cuts in budgeted items. Contact me to discuss automatic payments or other arrangements to make this easier for you. We may have to act quickly if revenues are low in the coming weeks, but we hope everyone will continue their generous donations at the level they have been so far.

Bob Erdman, Trustee for Finance



Religious Education Corner

“For a few days after every Hogwarts I bask in the glow of the intentional community we create and the magic at how it all comes together.”, written by an adult Kent Hogwarts Planner/Participant.

Upon reading these words, my heart was full with a resounding YES! Each passionate individual enters into the intentional community of Kent Hogwarts. These passionate individuals are made up of students, prefects, professors, kitchen witches and more! The result is a Kent Hogwarts experience in which students are willing get up early during the summer, professors rearrange work schedules to volunteer their time to teach, and kitchen witches prepare lunches in a kitchen with out A/C. There is a pull to this Kent Hogwarts experience that individuals of all ages experience and want to share with others!

Kent Hogwarts is the place to be for those magical days it appears. Hearts, curiosity and a sense of mystery are fully engaged by all. It is hard to explain if one has not experienced it. I liken it to the experience of learning something for the first time, when the AH HA comes or the light comes on! These are times in which the whole being is engaged and in relationship with something larger than the self.

This energy or spirit of engagement is present as summer and fall religious education planning occur and happen. During July children preschool thru 5th grade will explore

friendship. Throughout August, the medium of theater will age children on their journey of learning to relate to self and our environment.

Middle School and High School youth will be working on a project, TENT OF HOPE. They will be designing and painting a tent that will be displayed on the mall in Washington DC this November.

Don't forget to sign up for a shift in the church tent at the Heritage Festival.

Our Whole Lives parent orientation will occur on August 16th. Letters will be sent to parents of 7th, 8th and 9th graders. Youth from Youngstown may be joining us!

Fall planning is well underway. Much excitement is present in the new curriculum, “Spirit Play,” while other “old favorites” are being reviewed and readied for fall learning. The church nursery is seeking an adult to work with infants through 3 years of age on Sunday mornings. Please refer interested parties to the Director of Religious Education.

Summer office hours are by appointment. Contact the DRE via email or by calling the church office.

July 6th thru the 12, I will be away at a learning styles training. July 13 thru 19 will find me at Summer Institute.

Peace, *Diana VanWinkle*, Director of Religious Education



Recently found evidence that our minister has her own secret floor and elevator.



Fun = Social Activities Team

Your new Trustee for Fellowship, Lori McGee, is looking to put together a Social Activities Team. I need several people who are willing to organize and help out with congregation activities. This should not be too work- or time-intensive, and it is guaranteed to be fun, fun, fun!

Lori McGee

Hospital Visits and the Church

If you or a family member is admitted to a hospital you are asked to answer several questions. Among these questions is a query about your religion. If you want the church notified of your admission you need to answer the question and note the name of your church. It is not a required piece of information so the choice is yours. If you complete the answer the Pastoral Care service of the hospital will call the church to notify them of the admission. They will not give out any other information.

Jane Krimmer, Pastoral Associate

UU Bed & Breakfast Directory

Do you dream of inexpensive vacation travel to interesting destinations where you can stay in the homes of friendly people who share your ideals and are happy to provide directions and advice for their area?

The UU bed and breakfast directory *UU're Home* (formerly *Homecomings*) can fulfill your dream. For 27 years, we've provided a network of hosts in the United States (and a few abroad) who enjoy meeting new friends and who are happy to open their home to like-minded people.

You can also become a host and be listed in the directory. Contact us at 828-281-3253 or at info@uurehome.com, and we will gladly send you information about listing your accommodations.

Host listings on the *UU're Home* website at www.UUreHome.com are updated whenever changes are made or new hosts are added. The paper edition is published every year in April (and has many listings different from those on the website). For a copy of the 2007 directory, please send a check for \$20 (or \$25 and your e-mail address for both the book and a year's access to the website) to UU're Home, 43 Vermont Court, Asheville, NC 28806.



Becky Haines as Professor Dazleswift, founder of Kent Hogwarts, at Awards Ceremony

Spirit Play

We are offering an exciting new curriculum next year called "Spirit Play". This is a new UU Curriculum based on the Montessori method of education, involving story telling with props. We need your help in gathering the necessary objects. If you are able to donate any of the following materials, please contact Mary Leeson. All items need to be non-breakable.

A yard or more of **felt** in the following colors: red, orange, yellow, green, blue, indigo, violet.

Carpet squares

Small animals (beanie-baby size or smaller): cardinal, chickadee, dove, white rabbits, birds, squirrels, porcupines, frogs, fish, cows, pig, dog, donkey, rooster, chicken, baby chick, cat, duck, 2 zebras, white horse, black horse, dragon

People: these could be toy figures, made from cloth or wood. Each line represents a different story, so all should be made the same way

poor man, king, king's advisors
boy
princess, prince
girl, boy, grandmother, mother

Misc. objects:

Matchbox truck
Door knocker
Globe
Small bells
Candle snuffer
12" embroidery hoop
Kwanzaa kinara
Monopoly houses
Earthflag
Set of planets and stars
Small Earth ball

Thank you for your support as we build this exciting new curriculum for our children.



Christie Anderson presenting her June "Afterlife?" sermon



Food for Families

School is now out for the long summer months and for families living in poverty, that means no subsidized school breakfast and lunch program for the children. It means having to stretch budgets even further and many simply cannot do it. Kent Social Services needs our continued support to help provide meals and groceries for neighbors in need.

Child and family friendly items to consider include peanut butter, tuna, macaroni & cheese mix, pasta and canned spaghetti sauce, cereal(!), meal mixes like tuna or hamburger helper, meal-in-a-can items, canned vegetables and fruit, raisins & other fruit snacks, 100% juice, instant potato flakes/instant rice and pudding/gelatin mixes. {No glass bottles or jars.}

PLEASE consider bringing a food item (or 2) for our collection baskets EVERY week you attend church. We can and do make a difference ~ one can, one box, one person at a time.

In appreciation, *Elaine Yehle Bowen*

Volunteers Needed - Help Your Friends and the Environment

For over a year, a handful of us UUs have been volunteering second Wednesdays of each month at the County Clothing Center in Ravenna. We work from 10AM to 2PM, alongside volunteers from Immaculate Conception Church in Ravenna. Our church has been asked if we could also provide volunteers on the fourth Wednesdays of each month.

The Center takes in about 30 TONS a month of clothing, shoes, bedding, household goods, and toys and offers them free of charge to all comers. The operation also provides a major recycling opportunity, and keeps tons of usable items out of landfills.

Volunteers sort donations, discard soiled or damaged items, put clothes on hangers and assist customers and donors. There are also opportunities to volunteer on Tuesday and Thursday evenings from 6 to 8 PM.

Interested? contact Caroline Arnold



Olive Hobbs weeding at front of church.

"Ask Me" Name Tags

You may have noticed a few people with "Ask Me" on their name tags. These are members of our Membership team, and are always happy to answer any questions about the life and work of our church.

July Church Events

29 11:30-1:30 Pancake breakfast 4-5:30 Yoga w/ Barb 6:30-7:30 Women's choir 7-9 AA (FH)	30 10:15 am gentle Yoga 5:15 gentle Yoga 7:00 Tai chi 7:30 Clan practice	1 Thread/Web deadline 5:30 Mod. Yoga 7:00 Challenging Yoga	2 9:30a Yoga 7-9:00 Summer SGM (EA) 7-9:00 Finance Council (FL)	3 10:15a Yoga 5:30 Yoga 6-6:45 Meditation (FL)	4 9:30a-12:30- Couples Group (EA)	5
6 12-2:00 COM (EA) 12:30-2:30 Social Justice (FH) 4-5:30 Yoga w/ Barb 6:30-7:30 Women's choir 7-9 AA (FH)	7 10a-12:00 upstairs Annex in use 10:15a gentle Yoga 5:15 gentle Yoga 7:00 Tai chi 7-8:00 Clan- Stow Glen	8 Thread/Web deadline 5:30 Mod. Yoga 7:00 Challenging Yoga 7-9:00 Aesthetics (EA)	9 9:30a Yoga 7-9:30 Board mtg. (EA) 7-9:00 Summer SGM (F)	10 10:15a Yoga 5:30 Yoga 6-6:45 Meditation (FL) 7-9 Men's group (EA)	11	12 9:30a-12:30- Couples Group (EA)
13 Newsletter deadline 4-5:30 Yoga w/ Barb 6:30-7:30 Women's choir 7-9 AA (FH)	14 10:15 am gentle Yoga 5:15 gentle Yoga 7:00 Tai chi	15 Thread/Web deadline 5:30 Mod. Yoga 7:00 Challenging Yoga	16 9:30a Yoga	17 10:15a Yoga 5:30 Yoga 6-6:45 Meditation (FL)	18	19
20 4-5:30 Yoga w/ Barb 6:30-7:30 Women's choir 7-9 AA (FH)	21 10:15 am gentle Yoga 5:15 gentle Yoga 7:00 Tai chi 7:00 Clan- Kent Health Care	22 Thread/Web deadline 5:30 Mod. Yoga 7:00 Challenging Yoga 7-9:00 Living by Heart (FL)	23 9:30a Yoga 7-9:00 Living By Heart (FL) 7-9:00 Summer SGM (EA)	24 10:15a Yoga 5:30 Yoga 6-6:45 Meditation (FL) 7-9:00 Whiteness Visible (FL) 7-9:00 Capital Campaign (EA)	25	26 9:30a-12:30- Couples Group (EA)
27 4-5:30 Yoga w/ Barb 6:30-7:30 Women's choir 7-9 AA (FH)	28 10:15 am gentle Yoga 5:15 gentle Yoga 7:00 Tai chi 7:30 Clan practice	29 Thread/Web deadline 5:30 Mod. Yoga 7:00 Challenging Yoga	30 9:30a Yoga 7-9:00 Summer SGM (EA)	31 10:15a Yoga 5:30 Yoga 6-6:45 Meditation (FL)	1 6-9:00p- possible wedding rental	2 9:30a-12:30- Couples Group (EA)

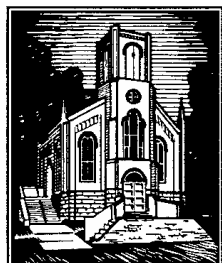
Tai Chi: 7:00 Advanced, 7:30 Intermediate, 8:00 Beginner - Yoga and Tai Chi are held in Fessenden Hall
 *EA- Eldredge Annex; FH- Fessenden Hall; FL- Founders' Lounge; L- Library; S-Sanctuary; N- Nursery
Calendar does not reflect changes or additions after June 22

A complete and up-to-date church calendar can be viewed at <http://www.localendar.com/public/uukent>
 or through a link on our website at www.uukent.org.



Celtic Clan at Community Dinner, June 21, 7 minutes before the deluge. Note ominous clouds.

Unitarian Universalist Church of Kent
228 Gougler Ave.
Kent, OH 44240



Return Service Requested
Return Postage Guaranteed

Call the office to cancel your *Chalice Flame*

Book Club Gatherings

On Tuesday, July 8, at 7 pm we will meet at Pat Pownall's. We will discuss The Art of Mending by Elizabeth Berg. In this book Berg confronts some of the deepest mysteries of life, exploring how even the largest sins can be forgiven by the smallest gestures.

On Tuesday, August 12 at 7 pm we will meet at the home of Martha Kluth. We will read Loving Frank by Nancy Horan. This is historical fiction about the relationship between Mamah Borthwick Cheney and Frank Lloyd Wright.

On Tuesday, September 9 we will meet at Annie Brightbill's in Navarre OH at 6 pm. Details and directions will be available closer to the date. We will read Winter Sky by Nevada Barr. Situated in Isle Royale National Park on Lake Superior, this is the 14th in the series of mysteries featuring the adventures of Ranger Anna Pigeon in our national parks.

Celtic Clan

July schedule

7/7/08 7 pm at Stow Glenn Assisted Living
7/14/08 No practice
7/21/08 7 pm Kent Health Care Center
7/28/08 7:30 to 8:45 Practice sanctuary

Tai chi --

- a non-impact "meditation in motion." Although you can study it for a lifetime, by coming you do not make a commitment for any number of sessions -- come when you can. You are welcome to start any Monday night. Wear loose fitting clothing, as it is participatory. Questions? Contact Susan Goekler, certified tai chi instructor with the Tai Chi Association of Atlanta.

7:00 Advanced
7:30 Intermediate
8:00 Beginner