

The Chalice Flame

The Monthly Newsletter of the Unitarian Universalist Church of Kent

February 2010

Sunday Services

9:30 and 11:15 am

228 Gougler Ave.

Kent, Ohio 44240

Phone: 330-673-4247

Fax: 330-677-4772

www.kentuu.org

uukent@sbcglobal.net

Minister:

Rev. Melissa Carvill-Ziemer
minister-uukent@sbcglobal.net

Minister's office hours:

Tuesday - Friday
By appointment

Office Manager:

Judy Brannan

Office hours:

Mon. through Fri. 9 - 1:30

Religious Ed. Director:

Karen Lapidus
dre-uukent@sbcglobal.net

Music Director:

Hal Walker

Commissioned Lay Leader:

Christie Anderson
christiea@neo.rr.com

Newsletter editor:

Brad Bolton
bbolton@neo.rr.com

Deadline:

The 15th each month

Last August I led a service based around questions from those in attendance. I wasn't able to answer all the questions submitted that day and promised I'd return to the remaining questions throughout the year. This month I'll address two questions about our physical facilities.

Can we add a lot more color to the sanctuary?

The best answer I have to this question is maybe. Decisions about color, art, beauty, decoration and furnishings in the sanctuary are made by two groups. One group is called the Aesthetics Committee. They are charged with coordinating the rotating art exhibits that hang on the sanctuary walls. This committee has been ably led by Harry and Jan Noden who will soon be finishing their terms of service. When you see them please extend your appreciation to Harry and Jan for bringing us so many wonderful shows over these last couple of years. Ed Stolish, our Trustee for Buildings and Grounds will be looking for new leaders for this committee so please speak to him if you are interested.

The other group I referenced is called the Art and Décor Committee. They are responsible for the decorations on and in front of the chancel space and on the wall behind the chancel. This group is well led by Jennifer May and Lois Weir. Each season Jen and Lois and the other members of the committee change the decorations in the chancel area to reflect the mood of the season. There is always room for more creative souls so please let them know if you are interested in participating.

I wonder if we can knock down the garage and build a small, safe, playground?

Others have also been wondering about this possibility and Ed Stolish is in the process of investigating what it would take to make it happen. Ed is hoping to schedule the first step, demolishing the garage, for sometime in February. Please look for more details in the Thread from the Web as we hope the demolition project will be a community undertaking. Ed will also be working with the city to find out what zoning restrictions, if any, we need to bear in mind as we make plans to utilize that space. We hope we will indeed be able to landscape an attractive, inviting green space with a few benches and some safe play equipment for our children to enjoy. If you'd like to be involved in the planning and building and landscaping, please speak to Ed. Your help is wanted and needed!

While on the subject of physical facilities, I want to publicly thank Jane Krimmer, the chair of the Master Plan Committee who has been working diligently for over two years to improve our parking situation. I am happy to tell you that effective February 1, 2010 the church is entering into an agreement with the City of Kent to formally sub-lease the gravel lot behind the church. There are many advantages to this arrangement, not least being our ability to plow the lot as needed and to put up a sign on North Mantua street indicating that the lot is available for church parking evenings and weekends. Thank you Jane for seeing this process through to completion!

"Melissa" cont'd p. 2 —————>

Upcoming Sermons

31 January

Earth Ministry: A New Journey

The Rev. Melissa Carvill Ziemer and Nancy King Smith

Our congregation has chosen to begin the process of working toward certification as a green sanctuary. Come explore the foundations of a Unitarian Universalist theology of environmental justice. Come consider the ways in which this new journey has the potential to change us and our relationship to the earth.

3 February- Wednesday Vespers

Sacred Songs

Dani Beale

Have you ever heard a song that makes your heart feel full, makes the colors around you brighter, and makes you feel more connected to all that is sacred? Tonight we will explore the commonalities in sacred music from different traditions and from our own Unitarian and Universalist traditions, and enjoy listening to and creating our own sacred songs.

7 February

Inspiring Sources

Mac and Susan Goekler plus church members

The UUA principles include the variety of sources from which we draw. This service will explore how our congregation has drawn from and benefited from each of the various sources and will introduce the changes proposed at the UUA General Assembly. Members of some groups within the church will exemplify how they reflect those sources and bring a personal perspective of how UUism broadens our exposure to wisdom from a variety of sources.

14 February

What Do You Know About Love?

Rev. Melissa Carvill-Ziemer and Worship Associate Dani Beale

It is common in Unitarian Universalist congregations (ours included) to liturgically reinterpret Valentine's Day. We look at the neurotheology of love and the music of love and the practice of loving our neighbors and more. This year we will turn our focus to the love that inspires the ubiquitous flowers and chocolate. Whether you are single or dating, divorced or widowed or married many years, I'd like to hear from you. What do you know about love? What do you know about how love changes over time? What do you know about making love last? I'd like to include some reflections from members and friends of the congregation (anonymously) in our worship service. Write to me by February 8 and I'll weave some of your words into the service.

21 February

Music Sunday

Hal Walker

Music by members of our congregation on the theme of love.

28 February

How to Help

Rev. Melissa Carvill-Ziemer and Worship Associate Marion Yeagler

Lots of people these days say they are spiritual but not religious. What is the difference? I'd say one critical difference is the commitment religious people make to be a part of a gathered community. What does it mean to be a part of this gathered community? Why do we expend the effort to keep this community alive and vital? How can we ensure that the legacy of this community is one we can be proud to say we helped shape?

"Melissa" from p 1

One last word about parking – I'd like to remind you that the trustees of the Franklin Township Hall have requested that we do not park in the spaces they own behind the hall any day other than Sunday. We ask that you please respect their wishes and help us be good neighbors.

In faith,



Moderator McGee's Musings

Covenant: n. an agreement, usually formal, between two or more persons to do or not do something specified. The ecclesiastical definition of covenant is: a solemn agreement between the members of a church to act together in harmony with the precepts of the gospel. We are a covenantal congregation. In a sermon once, Rev. Melissa said that the main difference between Unitarian Universalism and most other religions is that we are covenantal, not creedal. And, even though we may not follow the precepts of any particular gospel, we do have our seven principles to guide us. Our own UUCK covenant "inspires and challenges us to dwell together in right relationship."

Over the past few weeks, I feel that we have been "inspired and challenged" to consider our relationship with each other and with the world around us. When the board made the decision to enter into a fundraising opportunity with Shaklee, we were prepared for the fact that some members would not agree with the decision. In a congregation as large and diverse as ours, there is no way to make everyone happy, so to speak. But we tried



"You want beans? Too bad, you're getting them anyway." Kitchen Witch Kay.

our best. Clearly, we missed the mark on what the response would be. The board's duty is to serve the congregation and, because of the large and varied response, we wanted to hear your opinions and suggestions on this important matter face-to-face. The level of passion for how we deal with outside companies shows me that this is a conversation that has long since needed to occur. I am glad to have had the opportunity to hear you, and I want you to know that what you say matters a great deal to the board. At the last board meeting, a committee was put together to discuss, research and write a policy that will take into account the congregation's concerns as best it can. I will keep the congregation informed of the progress on this policy, and as always, do not hesitate to ask me or any other board member about it.

On a completely unrelated note, there will be a meeting on February 3rd to discuss the Master Plan. If you are a committee chair, or if you are simply interested in the Master Plan, please plan to attend. Our Master Plan keeps us motivated as a congregation, and the more members involved in making sure the plan is moving forward, the better for all of us. I do hope to see you there.

In service, *Lori McGee*

Books in the Church Library

Forrest Church, Life Lines: Holding on and Letting Go (Beacon Press, 1996). In this eloquent, personal, hopeful book, writer and minister Forrest Church (deceased 2009) explores the lifelines that can sustain us in times of trouble: deeper connections to neighbor and stranger, a better understanding of human limits, and a larger view of our place in the universe.

Ralph Alan Dale, Tao Te Ching: a New Translation and Commentary (Barnes and Noble, 2002). Written as early as the sixth century BC, it has become a classic work of spiritual enlightenment. It offers a much needed alternative to our fragmented, modern ways of thinking, feeling, and behaving. To live life in accordance with the Tao is to be in harmony with others, with the environment, and with oneself. The book has a number of beautiful photographs.

Growing Branches, Strong Roots: Transformational Living

District Assembly is at Ohio University Eastern Campus, St. Clairsville, OH on March 26-27. DA will focus on social justice issues. We will have a special Interfaith Youth Leadership Training for youth and youth allies; theme speaker Rev. Meg Riley will talk about Standing on the Side of Love; the Friday night panel discussion will focus on anti-racism efforts; and workshops on anti-racism, peacemaking, the green sanctuary program and helping others during the current economic crisis will be offered. Additional workshops focusing on leadership development, multigenerational programming, covenant groups, pastoral care and healthy congregations will be offered. Registration opens January 15th and all materials will be posted to the website by that date. For details visit <http://www.ohiomeadville.org/annmtg/index.html>

Retreating

I have been thinking a lot lately about the concept of "retreat", both because I am looking forward to my own retreat with professional religious educators and because I have been co-creating the upcoming Religious Education Teacher and Youth Group Advisors' Retreat (which will be held on February 27th) with the RE Committee.

The word retreat has many meanings but the one that is most pertinent to my situations is "the notion of temporarily removing oneself from one's usual environment in order to become immersed in another experience". From Thursday, February 4th until late on Saturday, February 6th, I will be on retreat with my DRE colleagues from the Ohio Meadville District in a lovely converted mansion perched atop a mountain near Wheeling, WV. We will gather for worship, sharing, relaxation and study. Our official study topic is storytelling, but we are sure to share hints and techniques about directing programs of religious education. I particularly look forward to gaining wisdom from my colleagues who serve mid-sized congregations, as I do. This is a new experience for me and even though I understand the theory fully, the practical applications are still part of my learning curve! In addition to retreating and withdrawing, I'm sure to be recharged as well.

As our RE Committee planned for the upcoming retreat for teachers and youth group advisors, we identified our goals which are to create a sense of community among the teachers, to encourage excitement about the remainder of the church year as it unfolds, to affirm that working with our children and youth allows us to deepen our own faith as Unitarian Universalists, to create a sacred time and space, to provide practical support to the teachers and advisors and hopefully, to start a tradition of a mid-year retreat. I hope that the retreat will be an immersion experience which provides our teachers and advisors with much deserved nurture and renewal.

In faith and with love, *Karen Lapidus*
Director of Religious Education

Tell Your Story

Come discover and explore the joy of writing. Join others regularly or drop in. Sundays in February are the 14 and 21 from 3:30 – 5:00 in the Eldredge Annex. Pat Pownall – leader.

Art in the Sanctuary

With Chairman Mao's glorification of the common worker in China, a new focus for art developed. Ding Ji-Tang, known as "the people's artist," began eulogizing the life of peasant farmers in his colorful wood-cut prints. While I was teaching in China, I collected several of his prints and those of one of his students. The prints will be in the sanctuary from Feb. 14 through March 21. I am happy to have an opportunity to display these at the church to celebrate the beginning of the Year of the Tiger, and I invite you to attend my reception on Saturday, February 20th from 7 to 9 pm in Fessenden Hall.

Barbara Geisey



Professor Altbaum (Bonnie) oversees a wizard plant a fava bean at Hogwarts.

Neighboring Faiths: Abrahamic Faiths

Through reading of Huston Smith's *Illustrated World Religions*, the Bible, and the Koran; discussion; and visiting other places of worship, this multisession adult class will examine the historic backgrounds, symbols and liturgy, and central values of Judaism, Christianity, and Islam. To sign up or learn more about the class, contact Bonnie Fraser Sunday, February 28 at the pancake breakfast. She will have a big bell at both seatings. Discussion sessions will be held Sunday afternoons at 2 p.m.

Introducing our Pastoral Associate Listening (PAL) Team

The Pastoral Listening Team is a branch of our minister's care ministries and is overseen by her.

PAL Team members are trained in the practices of *presence* and *pastoral listening* to serve members of our congregation as they experience the inevitable ups and downs of life. Under our minister's supervision, we engage in on-going training to deepen our capacity to listen with unconditional positive regard to the experiences of another.

We bring this ministry to those unable to attend church as well as to those who regularly attend church. We offer presence, companionship, and prayer to those facing end of life. We provide this ministry on an as-needed basis, which may mean a one-time conversation or may span months or years.

We hold confidences with sacred respect. Our mission is to provide a more neutral and non-judgmental sounding board for you as you explore your spiritual process. We do not give advice or seek to "fix" your circumstances. Our contribution is to listen as caring witness with open-hearted good will to the truth of your experience. We respect your unique spiritual path and seek to support you as you travel your personal journey – to remind you that you are not alone and that you are a valued part of this great and caring community.

Each uniquely individual PAL Team member offers his or her own ways of bringing attentive presence. Depending upon the personal gifts of the PAL Team member, meetings with you may involve activities such as, thoughtful conversation and compassionate listening, sharing songs and music, laying-on hands with a listening touch, taking a walk, or reading meaningful text. Some of our team offer traditional prayer support while others offer prayer in the broadest sense of the word – sharing spiritual presence.

We, the PAL Team members, are drawn to this particular ministry. We are nurtured in our own spiritual process by our commitment and participation in regular ministry meetings where we explore our own capacities be present with the wholeness of life and how to bring this presence to another. We see ourselves as part of the great circle of giving and receiving, and it is our honor to share this ministry with you! We look forward to introducing ourselves to you at our upcoming Commissioning Ceremony.

Watch for details about our ministry on the church bulletin board. If you would like to speak about possibly receiving PAL support or if you are interested in training to become a PAL Team member, contact our minister or our PAL Team Coordinator, Susanna Smart.

Sunday Adult RE

During the first service at 9:30 on Sundays, an adult discussion group meets in Fessenden Hall. Anyone is welcome – to attend regularly or when available and interested. In February, we will be considering the UU Principles and their implications for how we live our lives.

February & March: The UU Principles

Session 1: Feb. 7	We, the member congregations covenant
Session 2: Feb. 14	Inherent worth and dignity
Session 3: Feb. 21	Justice, equity, and compassion
Session 4: Feb. 28	Acceptance of one another
Session 5: March 7	Free and responsible search
Session 6: March 14	Right of conscience
Session 7: March 21	World community
Session 8: March 28	Interdependent web



Going green with gusto - Ian McIntyre and his daughter Hannah rode to church from Akron on a cold January day.

Financial Corner

The overall financial situation for the year improved a little in December, and may improve more in January, with 2 weeks yet to go from the date of this writing. Year-to-date expenses are still about \$5000 below plan, and donations are now \$8500 below plan, \$1500 less than \$10,000 that we were below YTD plan at the end of November.

The first half of January yielded good donations. The plan expected high donations, since many may wait until the new year to make their annual donation. As mentioned before we plan to re-assess our financial position once January information is complete.

In any case, it is very clear that the fiscal year shift was worthwhile in terms of cash flow. We are now half way through the fiscal year and have over \$25,000 in the General Fund. Most of this is in a money market account earning interest. We know we will need a lot of it for expenditures as we go through snowplow season and have high gas bills for winter months. Our insurance costs also went up recently.

You will be getting a Contribution Report for calendar year 2009 in January. This will include your contributions to FY2009 through June 30, 2009, and your contributions to this fiscal year [FY2010, from July 1 through December

31]. Please review this. Compare the actual contribution numbers to your records and to your pledge. If you pledged annually, the entire pledge amount is shown. If you pledged quarterly, monthly or weekly, the pledge amount is the FY2010 amount pledged for the period July 2009 through December 31.

We have most of the revenue from the service auction. But a few bills are still outstanding. If you have not yet paid for the items you purchased at the service auction or don't know what you owe, please contact me to make arrangements.

If you have any questions about your pledge or contribution payments shown please contact me. Latest thoughts on your plans for the rest of the year through June 30, 2010 will be valuable to us in assessing our position vs. the budget. Since our revenues are below plan, if you can give more, that would be great. If your situation is that you need to modify your pledge we want to know about that. So let's talk.

Thanks for your cooperation, your dialog with us on these matters, and your generous contributions to our church.

Bob Erdman, Trustee for Finance



Appreciation

Voltaire said that "appreciation is a wonderful thing. It makes what is excellent in others belong to us as well." The Committee on Ministry (CoM) believes that appreciation is one of the core charges and duties of our group.

One definition of appreciation is "a feeling or expression of gratitude." Expressions of gratitude can be made in different ways and may include but are not limited to a smile, a hug, a sincere verbal thank you, a hand written note, a mention in the Thread, the newsletter or from the pulpit, a nomination for a recognition award or a small material token or gift.

Throughout the year, the CoM works toward extending appreciation to members of our congregation. While our

second principle states we believe in justice, equity and compassion in human relations, it is also true that we live in neither a utopian nor an egalitarian society. We acknowledge that as fallible beings, we will not be able to personally recognize each person deserving of appreciation. We do, however, pledge to do our utmost in support the health and well being of all our church's many ministries and express our gratitude to each member of our beloved community for your part in living our faith.

The UUCK Committee on Ministry

Elaine Yehle Bowen – chair

Rev. Melissa Carvill-Ziemer

Chris Hurlbut

Jane Krimmer

It's a Banner Day!

You can help create a new banner that symbolizes the Kent Church community. Designed by Amber Scott (see below), it will be proudly displayed in our sanctuary, at the District Assembly, Summer Institute, and at General Assembly. Beth Wills donated most of the material, but we now need to finish this task by raising enough funds to cover the cost of making it. To accomplish this, the banner committee is raffling off a "Winter Break out of Cabin Fever" Basket at coffee hour on Sundays. Tickets are \$2.00 a piece or three for \$5.00. Direct donations will also be accepted.



The new church banner design
By Amber Scott

Valentine's Dance at Church

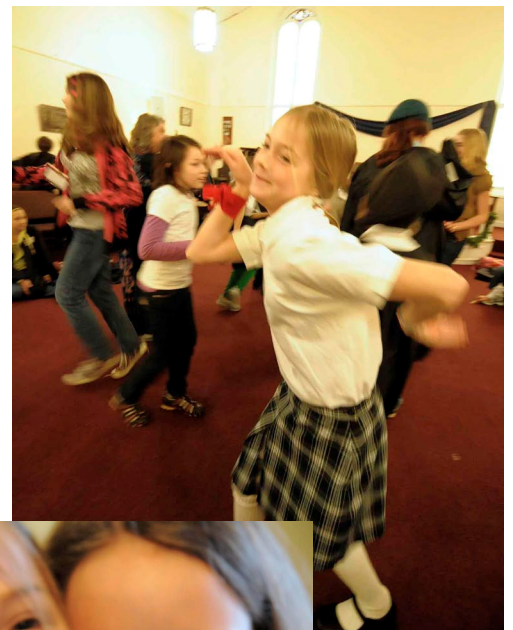
We will have a Valentine's Dance on Saturday February 13th starting at 7:00 in Fessenden Hall. Bring a snack to share and BYOB (Wine and Beer only). It's sure to be fun so plan on attending!

Kay Clatterbuck

Books, Books, Books

The annual book sale is coming in April. We hope you've been saving your good condition, gently used books. If not, time to start clearing out those bookcases! The book sale will be on Saturday, April 17 in Fessenden Hall from 9 am to Noon. We will begin accepting donations on Sunday, April 11. In preparation, we will need volunteers to help sort and set-up during the week of the 12th. If you can spare an hour or two in the evenings of Wednesday, 4/14 or Friday, 4/16, we'd love to have you. An added bonus: volunteers may shop at the end of their work shift and we have a lot of fun! All proceeds from the book sale are donated to the church's general operations fund.

Contacts for book sale information: Elaine Yehle Bowen at or Sandy Bowers.



Margee had a blast at Hogwarts,
Kent Branch.

Unnatural Causes

As the debate around health care reform rages with its undercurrents of racial and class inequities, this series will view and discuss the powerful documentary series, "Unnatural Causes: Is Inequality Making Us Sick?" This four-hour documentary explores the ways that racial and socioeconomic inequities impact health care outcomes for individuals and examines the costs to the country as a whole. The sessions will be held on Thursday evenings from 7:00 to 9:00. Please call the office to register. Leader: Saunis Parsons.

Jan. 28- In Sickness and in Wealth: What connections exist between healthy bodies, healthy bank accounts and skin color?

Feb. 4- When the Bough Breaks: How racism gets embedded in the body and affects birth outcomes.
- Becoming American: Latino immigrants arrive healthy but don't stay that way

Feb. 11- Bad Sugar: Diabetes in two Native American communities
- Place Matters: Where you live predicts your health

Feb. 18- Collateral Damage: Marshall Islanders are caught between the developing and industrial worlds
- Not Just a Paycheck: Unemployment takes a toll in Michigan but not in Sweden

Strategic Plan 2010-2015

The Master Plan Committee is responsible for updating our Strategic Plan. We hope to have broad involvement from church leaders and membership to accomplish this. On February 3, 2010 at 7:45 pm there will be a meeting in the church sanctuary conducted by the Master Plan Committee. Two items are on the agenda.

- See where we are with the goals of the 2009-2014 Strategic Plan.
- Determine the goals of the 2010-2015 Strategic Plan.

The church leadership and committee chairs have received an invitation to this meeting. In addition we would like the congregation to join the discussion. If you would like to review the current Strategic Plan please go to the church website: www.kentuu.org If you cannot join the meeting but wish to comment please email Jane Krimmer, Chair of the Master Plan Committee.

"Soup-er " Bowl February 7

The football season is almost over but in Portage County, hunger and the need for food is sadly never over. This is an opportunity to help our neighbors. The "Soup"er Bowl is a Sunday, February 7 - the NFL Super Bowl, devoted to the collection of cans - soup, chili, stew, ravioli (& other canned pasta) to benefit the Kent Social Services food pantry on S. Water Street. { brown paper grocery bags are also needed }

If you're not a shopper or forget your cans at home, an empty soup pot will be available to gratefully accept cash and coin donations. Acme gift cards are also available at the Acme Bucks table for donation to KSS in a variety of denominations starting at \$10.

Please look for the table in Fessenden Hall with the football theme tablecloth - before, during, between and after services on Sunday, February 7. Together, we make a difference - one can, one quarter, one dollar, one person at a time.

For questions or further information, please contact Elaine Yehle Bowen.

Local Foods Panel Discussion

The intentional eating group is sponsoring a special event on the topic of Local Foods on Wednesday February 10 from 6:30 to 8PM, and all are welcome to attend. The growth of the Kent Farmer's Market (and other markets) in recent years is a sign of the increased interest in buying local foods. We are sponsoring a panel discussion at church to provide information about this topic. For this event, the panel members will all be people who are involved in growing, raising, or producing foods for local consumption. You can learn more about the availability of different foods as well as the challenges involved in creating a local food market in our area. In addition to presentations, there will be time for questions.

This event will take place in the church sanctuary. Information about the presenters will be distributed closer to the event. This event is open to the public so feel free to invite people from outside the church. Questions? Contact Kathy Kerns or Jennifer May.

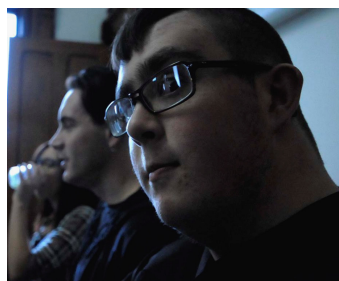
February Church Events

31 9:30 Adult RE EA 10:30 Pancakes 11 New UU class EA 12:15 Even more pancakes 1-3 Green Sanctuary F+S <i>PS</i> 4:00 Yoga 6:30 Choir 7-9 AA FH	1 10:15 Yoga 5:15 gentle Yoga 7:00 Tai chi	2 Thread/Web and eNuus deadline 5:30 Mod. Yoga 7:00 Challenging Yoga 7-8:30 Sacred Self EA	3 9:30 Yoga 11:30-12:30 Yoga 5:30 Pilates 7:00 Vespers S 7:45-9:45 Planning mtg. S <i>p8</i>	4 9:30 Yoga 5:30 Yoga 7-9 Unnatural Causes <i>FL p8</i> 7:30 Yoga meditation	5 6-7:30 Prenatal Yoga	6
7 11:00 New UU class EA 12:15 Souper Bowl Chili FH <i>p8</i> 2:00 Nominating Com. EA 4:00 Yoga 6:30 Choir 7:00 Coming of Age EA,F 7-9 AA FH	8 10:15 Yoga 5:15 Yoga 7:00 Tai chi	9 Thread/Web and eNuus deadline 12:00 Retiree lunch FH 5:30 Mod. Yoga 7:00 Challenging Yoga 7:00 Book Group FL 7:00 Board mtg. EA	10 9:30 Yoga 11:30 Yoga 5:30 Pilates 6:30 Intentional Eating S 6:30 RE mtg. EA	11 9:30 Yoga 5:30 Yoga 7:00 Unnatural Causes <i>FL p8</i> 7:30 Yoga	12 6:00 Prenatal Yoga	13 7:00 Valentine's party FH <i>p7</i>
14 3:30 Writing Group EA 4:00 Easy yoga 6:30 Choir 7-9 AA FH	15 Newsletter dead- line 10:15a gentle Yoga 5:15 Yoga 7:00 Tai chi	16 Thread/Web and eNuus deadline 5:30 Mod. Yoga 7:00 Challenging Yoga 7:00 Sacred Self EA	17 9:30 Yoga 11:30 Yoga 2:30 Board mtg. EA 5:30 Pilates	18 9:30 Yoga 5:30 Yoga 7:00 Unnatural Causes <i>FL p8</i> 7:30 Yoga	19 6:00 Prenatal Yoga	20 7:00 Art reception S
21 12:30 RE event FH 4-5:30 Easy Yoga 6:30 Choir 7:00 Coming of Age 7-9 AA FH	22 Hogwarts 10:15 am gentle Yoga 5:15 Yoga 7:00 Tai chi	23 Thread/Web and eNuus deadline 5:30 Mod. Yoga 7:00 Challenging Yoga	24 9:30 Yoga 11:30 Yoga 5:30 Pilates	25 9:30 Yoga 5:30 Yoga	26 6:00 Prenatal Yoga	27 9-2:00 RE teacher retreat
28 9:30 Adult RE EA 10:30 Pancakes 12:15 More pancakes 3:30 Writing Group EA 4:00 Yoga 6:30 Choir 7-9 AA FH	1 10:15 Yoga 5:15 Yoga 7:00 Tai chi	2 Thread/Web and eNuus deadline 5:30 Mod. Yoga 7:00 Challenging Yoga	3 9:30a Yoga 5:30 Pilates 7:00 Vespers S 7:30 Adult RE mtg. EA	4 5:30 Yoga	5 6:30 Family Game Night FH	6 7-9:00 Mark Twain S

Tai Chi: 7:00 Advanced, 7:30 Intermediate, 8:00 Beginner - Yoga and Tai Chi are held in Fessenden Hall
 EA- Eldredge Annex; FH- Fessenden Hall; FL- Founders' Lounge; L- Library; S- Sanctuary; N- Nursery;
 CB- Christie and Brad's house

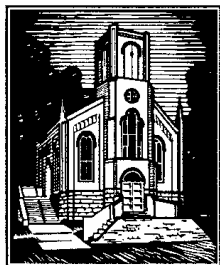
Calendar does not reflect changes or additions after January 21

A complete and up-to-date church calendar can be viewed at
<http://www.localendar.com/public/uukent> or through a link on our website at www.uukent.org.



Prof. Vercingeterix (Justin) and
 assistant Alex taught History of
 Magic at Hogwarts

Unitarian Universalist Church of Kent
228 Gougler Ave.
Kent, OH 44240

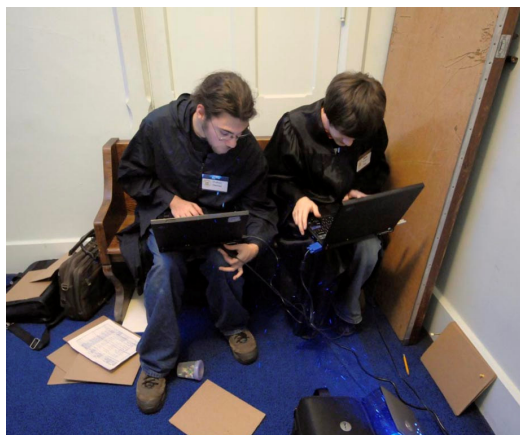


Return Service Requested
Return Postage Guaranteed

Call the office to cancel your *Chalice Flame*

February Celtic Clan

2/1/10 7pm Kentridge at Golden Pond
2/8/10 7:30 pm Practice at Christie and Brad's
2/15/10 7:30 pm Practice at Christie and Brad's
2/22/10 7pm Stow Glenn Assisted Living



Tracey and John taught
Astromancy at Hogwarts

Evening Book Group

The Book Group will meet on Tuesday, February 9, at 7 pm at the home of Martha Kluth. We will each read a mystery of our choice to share with the group. Bring suggested book titles for March.

Out To Lunch Bunch

Meet at China City except the last Sunday when the pancake breakfast is held at church. Come join us after second service for food and fun and conversation.